



---

**COMMUNICATIONS**

---

**Post Office Class:** Second  
**Newspapers**                      **Frequency**  
The Crockett Times              Weekly  
**Radio Stations:** One local  
**Television Stations:** 1 in Jackson; 5 in Memphis  
**Cable Television:** Charter Communications  
**Telephone Company:** Crockett Telephone Company

---

**FINANCE**

---

**Banks:** 2  
**No. of Branches:** 3  
**Combined Deposits:** \$95,363,000  
**Date of Deposit:** June 30, 2017

---

**GOVERNMENT**

---

**Gov't (type):** City: Mayor & Board of Aldermen  
County: County Mayor & Commission

	<b>City</b>	<b>County</b>
<b>Police Officers:</b>	5	12
<b>Police Cars:</b>	5	8
<b>Planning Commission:</b>	Yes	Yes
<b>Zoning Regulations:</b>	Yes	Yes
<b>Industrial Development Board:</b>	Yes	Yes
<b>Firefighters:</b>	0	1
<b>Volunteers:</b>	25	
<b>Insurance Rating:</b>	6	9

---

**CLIMATE**

---

**Annual Average Temperature:** 62.1°  
**Monthly Average High Temp.** Jan. 48.1° July 91.2°  
**Monthly Average Low Temp.** Jan. 29.1° July 69.3°  
**Annual Average Precipitation:** 49.73"  
**Annual Average Snowfall:** 4.8"  
**Elevation:** 450' above sea level  
**Prevailing Winds:** South-Southwest  
**Mean Length of Freeze Free Period (Days):** 236

---

**NATURAL RESOURCES/AG PRODUCTS**

---

**Minerals:** Sand  
**Timber:** Oak & Gum  
**Crops:** Cotton, Corn, Soybeans, & Strawberries

---

**COMMUNITY FACILITIES**

---

**Licensed Day Care Providers**

**Day Care Centers:** 2  
**Day Care Homes:** 1

**Education**

**State Industrial Training Service Available:** Yes

**Type of Public School System:** City/County

	<b>Schools</b>	<b>Enrollment</b>
<b>Elementary .....</b>	5	1,382
<b>Middle/Jr. High.....</b>	1	574
<b>Senior High .....</b>	1	842
<b>Private &amp;/or</b>		
<b>Parochial .....</b>	0	
<b>Technology Centers...</b>	1*	
<b>Colleges.....</b>	0	
<b>Libraries .....</b>	1**	Collection 219,512 w/READS

\*within 20 miles

\*\*in Alamo, 6 miles

**Health Care**

**Hospitals:** 2\* (787 Beds)  
**Clinics:** 2  
**Doctors:** 2  
**Dentists:** 1  
**Nursing Homes:** 1 (120 Beds)  
\*Jackson - 13 miles

**Churches**

**Protestant:** 10  
**Catholic:** 0  
**Jewish:** 0  
**Other:** 0

**Recreation**

<b>Parks .....</b>	1	
<b>Golf Courses.....</b>	1	
<b>Swimming Pools...</b>	1	
<b>Country Clubs.....</b>	1	
<b>Theaters.....</b>	0	
<b>Bowling Alleys.....</b>	0	
<b>Hotels &amp; Motels ...</b>	2	<b># Rooms:</b> 35
<b>Largest Meeting Room Capacity</b>	200	
<b>Restaurants .....</b>	14	

---

**SELECTED ECONOMIC INDICATORS  
FOR CROCKETT COUNTY**

---

**Estimated County Available Labor**

**Date:** 01/18  
**Total:** 310  
**In Surrounding Labor Market Area:** 5,100  
**High School Graduates 2017:** 199

**Labor Force Estimates**

Annual Average Employment	2016
Civilian Labor Force.....	6,790
Unemployment .....	420
% of Labor Force.....	6.1%
Total Employment.....	6,370

**Per Capita Income**

Year	Amount
2016	\$35,543

**Retail Sales**

Year	Amount
2016	\$111,258,796

**Educational Attainment (25 years & older)**

	Percentage
Under 12 Years	23.5
12 – 15 Years	62.9
12 Years only	39.5
Some College	18.4
Associate Degree	5.0
High School Degree or Higher	76.5
16 Years or more	4.9
16 Years only	8.7
Bachelor’s Degree or Higher	13.6

**Ten Year Manufacturing Growth Report**

Years: 2008-2017	New Plants	Expansions
<b>Number Projects:</b>	2	2
<b>Total Investments:</b>		

---

**UTILITIES**

---

**Electricity**

**Electric Power System:** Gibson Electric Membership Corporation  
**Source Company:** TVA

**Gas**

**Gas Supplier:** Bells Gas & Water  
**Source Company:** Williams Pipeline  
**Fuel Oil Suppliers:** 1  
**Suppliers of LP Gas:** 1

**Water**

**Source:** Wells - City of Bells  
**Capacity:** 600,000 GPD  
**Current Consumption:** 150,000 GPD  
**Storage Capacity:** 575,000 GPD

**Sewer**

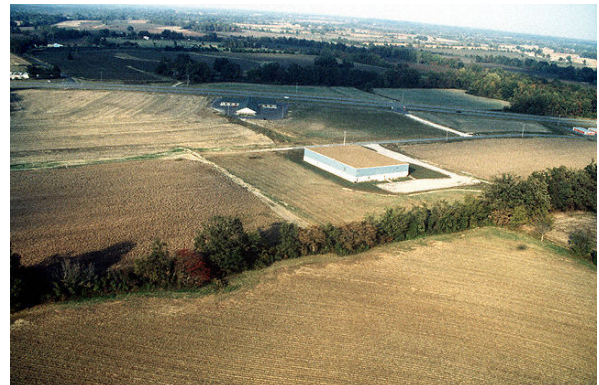
**Type of Treatment:** 40-acre Lagoon – City of Bells  
**Capacity:** 150,000 GPD  
**Current Usage:** 110,000 GPD  
**% City Sewer Coverage:** 100  
**% Storm Sewer Coverage:** 10  
**Solid Waste Disposal:** County landfill

---

**AVAILABLE INDUSTRIAL PROPERTIES**

---

Visit [www.wtia.org](http://www.wtia.org) for the latest listing of industrial buildings and acreage for sale and/or lease.



*Highway 412 Industrial Site  
23 Acres*

---

## LOCAL INDUSTRY

---

<b>Firm Name</b>	<b>Product</b>	<b>Employment Total</b>
Pictsweet Frozen Foods	Processed frozen vegetables	600
Bells Nursing Home	Nursing home	125
Mid South Industrial	Full service contractor	75
Bells City Schools	Education	60
Bonnie Plant Farms	Plants	40
RDS, Inc.	Recycling of oils and lotions	17

### **For Further Information Contact:**

West Tennessee Industrial Association  
26 Conrad Drive  
Jackson, TN 38305  
800-336-2036  
[www.wtia.org](http://www.wtia.org)  
[westtn@wtia.org](mailto:westtn@wtia.org)

Crockett County Chamber of Commerce  
29 North Bells Street  
Alamo, TN 38001  
Phone: (731) 696-5120  
[www.crockettchamber.com](http://www.crockettchamber.com)  
[cmoore@crockettchamber.com](mailto:cmoore@crockettchamber.com)